

skypod[®]

Eye-catching, affordable and easy
to install pitched PVC-U skylights



All together better





skypod®

PITCHED PVC-U SKYLIGHTS

There are lots of ways to add light to buildings, but none are as stylish as Skypod pitched PVC-U skylights

Impress customers and end-users with desirable, space-enhancing skylights

The Eurocell Skypod pitched skylight system enables you to create an eye-catching, contemporary feature that floods the interior of a property with natural light. It brings life and freshness to uninspiring flat-roofed buildings, and makes a stunning alternative to conventional conservatory roofs.

Skypod skylights add height, light and volume to any living space. They are the perfect choice for a wide range of refurbishment, extension or new-build projects – including reception areas, classrooms, orangeries, kitchen-diners and garage conversions.

Affordable, energy efficient and attractive – the perfect alternative to aluminium

Eurocell designed Skypod as an affordable alternative to aluminium skylights, making it accessible for more applications, to more people. As well as value issues, the 'industrial' aesthetic of aluminium skylights is unsuited to many properties and not to everyone's taste.

Skypod offers significant energy-efficiency improvements, with a U-value as low as 1.0* – helping your customers to save on their energy bills. The PVC-U cappings also help homeowners to match the appearance of their skylight to existing PVC-U windows and doors.

WHY CHOOSE SKYPOD?



Designed for superior performance



Fast, accurate installation



U-values as low as 1.0*



Fixed 20° pitch



A choice of frame and glass colours



Cheaper than aluminium alternatives



Kits delivered in 5 working days



10-year guarantee

The architectural design means there are no fussy crests or finials to fit, giving your customers the ultimate in clean sight-lines. A unique ridge end cover cap completes the sleek appearance.

Create skylights of any size, up to 2.75m x 8.7m

Skypod is available in a wide range of sizes, so you can create a skylight that's suitable for any project. With four design options to choose from – including NEW! Skypod SQ – you can tailor Skypod to suit your customers' individual needs.

Simple, fast installation – for a quality-assured finish on every job

Crucially, Skypod has been designed for fast, accurate, simple installation. It requires only square cuts, with no mitring or awkward angles to negotiate, and all screw holes are pre-drilled. This enables installers to give

customers a precision-fitted watertight skylight, while making the job as quick and easy as possible.

Delivered in five working days

Once the site has been surveyed and measurements taken, you can order your bespoke Skypod roof from any of the 135+ Eurocell branches across the UK. Your complete ready-to-install kit, including all screws and fixings, will be delivered to the branch in five working days. You can then either collect it yourself or arrange for free delivery direct to your site**.

Complete the job

All the tools and sealants you need to install your skylight to the highest standard are available from your local Eurocell branch, so you can pick up everything you need when you collect your Skypod. It's important to use a sealant that is compatible with self-cleaning glass, and we recommend Soudal SMX 506.

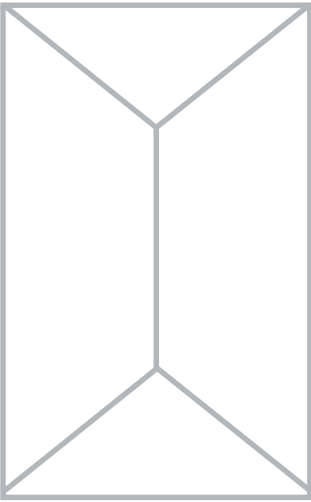
* Standard U-value is 1.2. U-value is applicable to glass only.

** Free delivery applies to orders over £100 and deliveries to mainland UK only, excluding Northern Scotland.

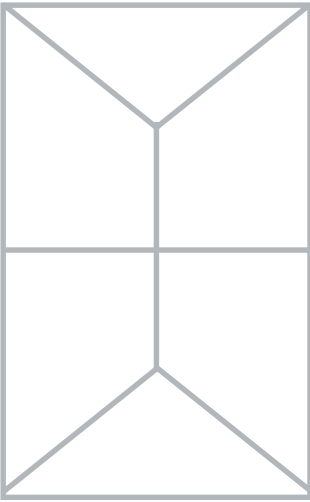


skypod®

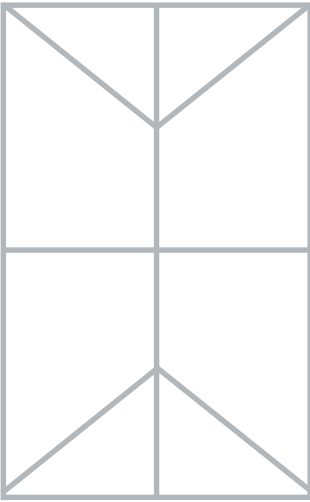
SEE THE FULL RANGE



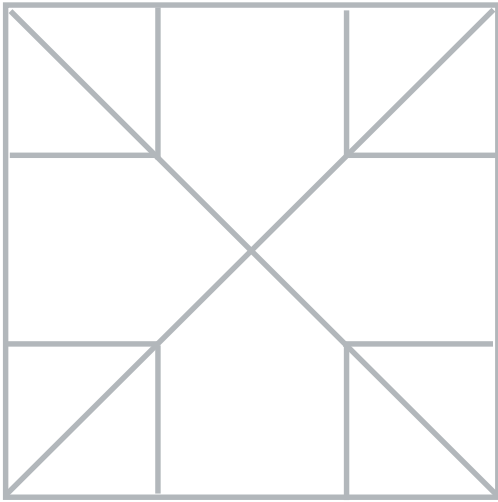
Up to 1.5m x 2.75m



Up to 1.5m x 7.45m



Up to 2.75m x 8.7m



skypod^{SQ}
Up to 2.75m x 2.75m



skypod^{SQ}
Up to 1.5m x 1.5m

Note: Design will vary dependent on size. All Skypod skylights are made-to-order, and you will receive a design to sign-off before the item goes into production.



MORE FLEXIBILITY

FOUR SKYLIGHT STYLES ARE NOW AVAILABLE

No side rafter bars

With the fewest possible number of slimline bars needed to create uninterrupted glazed surfaces of up to 1.5m x 2.75m, Skypod with no side rafter bars is the cleanest, simplest way to introduce overhead natural light into any room space. It offers a practically unobstructed window on the world above and, come rain or shine, keeps homeowners warm and comfortable thanks to its temperature controlling glass and high levels of energy efficiency.

With side rafter bars

By introducing additional bars to the standard Skypod design, side rafter bars extend the possibilities for fully glazed rooflights to spans of up to 1.5m wide x 7.45m long. The result is a dazzling feature roof that turns what could so easily be an underwhelming flat roof extension into a year round living space with all the natural light and lofted headroom your customers could ever wish for.



Skypod with no side rafter bars

Three-bar gable

The extra strength and rigidity of our 3-bar Skypod option not only allows you to install even longer, even wider vaulted rooflights into your customers' homes. It also gives a much more traditional 'orangery' style look to their rooflight, with the introduction of classically proportioned end panels in a spacious vaulted glass ceiling up 2.75m wide x 8.7m long in size.

Skypod SQ

The alternative to a single span rectangular rooflight, Skypod SQ is the square skylight that offers perfectly balanced sightlines and, thanks to its simple 4-hip design, higher levels of natural light than conventional designs of the same surface area. Because Skypod SQ can be produced in sizes right down to 0.5m x 0.5m, it means even the smallest flat roofed space in the home can benefit from day long natural light.



With this 3-bar gable design, you can create larger skylights



skypod^{SQ}

Now you can give your customers a square skylight – with symmetrical looks!



1.0*
U-VALUE

UNIQUE
SPIDER BAR GLAZING CAP

SLEEK
DESIGN

FIXED **20°** PITCH

ARCHITECTURAL
COLOURS

skypod®

EXCEPTIONAL STYLE & PERFORMANCE

Colours to frame the view

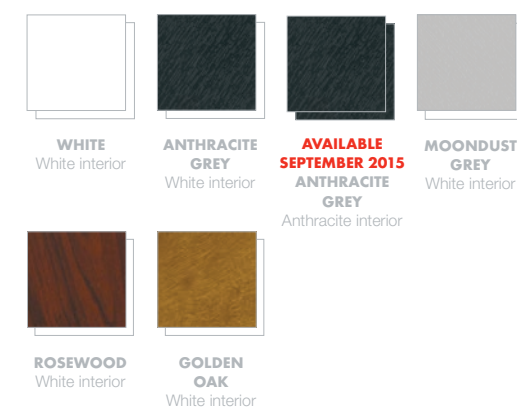
Like all Eurocell PVC-U products, Skypod comes with an exact colour-match guarantee. That means the colour is precisely matched to all Eurocell window, door and conservatory roof products, creating a co-ordinated, consistent look across any property.

Skypod has a white internal finish as standard, to maintain a bright, fresh interior. A range of external colours is available to complement existing architectural style, as well as a choice of glass options.

Ten-year guarantee

Skypod skylights are guaranteed for ten years. That means you can give your customers the assurance of a robust, well-designed, precision-made product that's built to last – manufactured by the UK's leading PVC-U specialist.

FRAME COLOURS



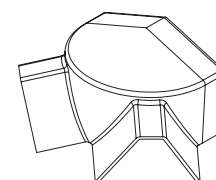
GLASS COLOURS



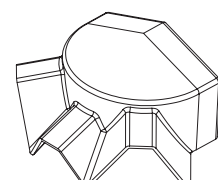
TECHNICAL INFORMATION

SKYPOD PITCHED SKYLIGHTS

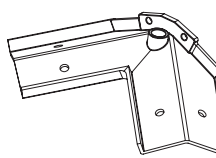
COMPONENTS



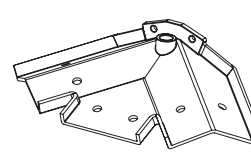
CRS 9241
Skypod 2-bar top cap



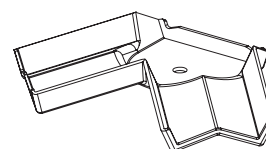
CRS 9240
Skypod 3-bar top cap



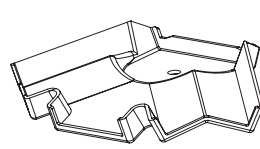
CRS 9522A
Skypod 2-bar spider bracket



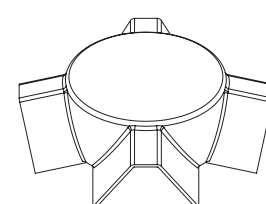
CRS 9521A
Skypod 3-bar spider bracket



CRS 9249
Skypod 2-bar bottom cap



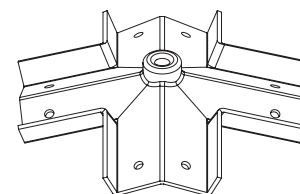
CRS 9248
Skypod 3-bar bottom cap



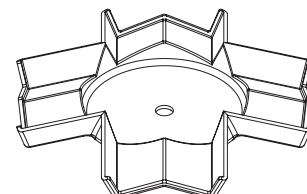
CRS 9242
Skypod SQ top cap



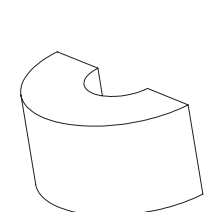
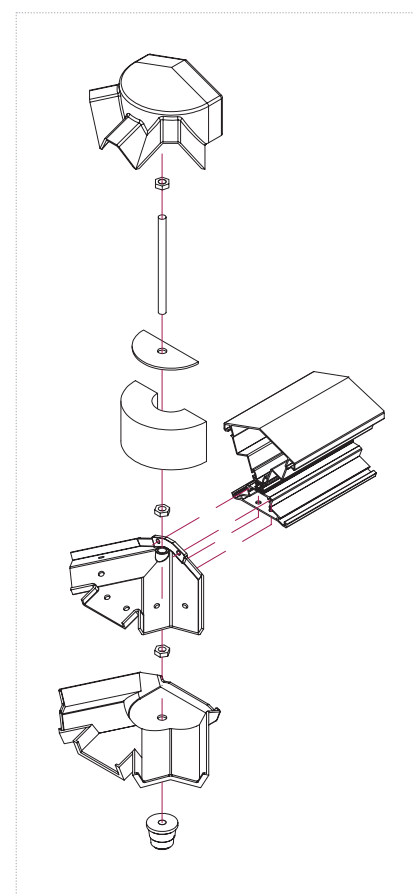
CRS 9423
Skypod SQ foam bung sealing plate



CRS 9523A
Skypod SQ spider bracket



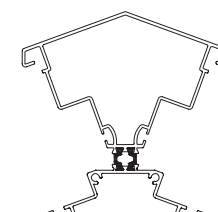
CRS 9250
Skypod SQ bottom cap



CRS 9421
Skypod foam bung



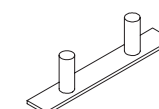
CRS 9422A
Skypod foam bung sealing plate



CRS 9520A
Skypod ridge body



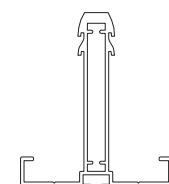
CRS 8625
Single variable support stud



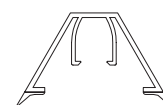
CRS 8624
Double variable support stud



CRS 8534A
M10 decorative boss



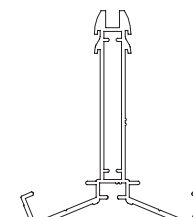
CRS 8501A
Standard rafter



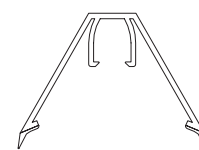
CRS 8016
25mm rafter top cap



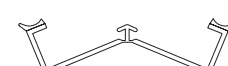
CRS 8011
Rafter bottom cap



CRS 8502A
Edwardian hip



CRS 8017
25mm Edwardian hip top cap



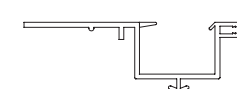
CRS 8012
Hip bottom cap



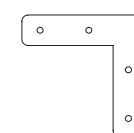
CRS 9550A
Skypod eaves 20°



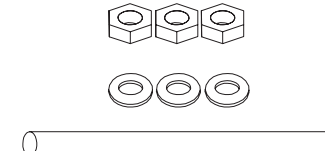
CRS 8053
Eaves beam seal



CRS 8024
24/25mm ridge glazing trim



CRS 8654
90° eaves beam cleat



CRS 8034
M10 nylon threaded bar



Rafter / hip end cap
CRS 8201



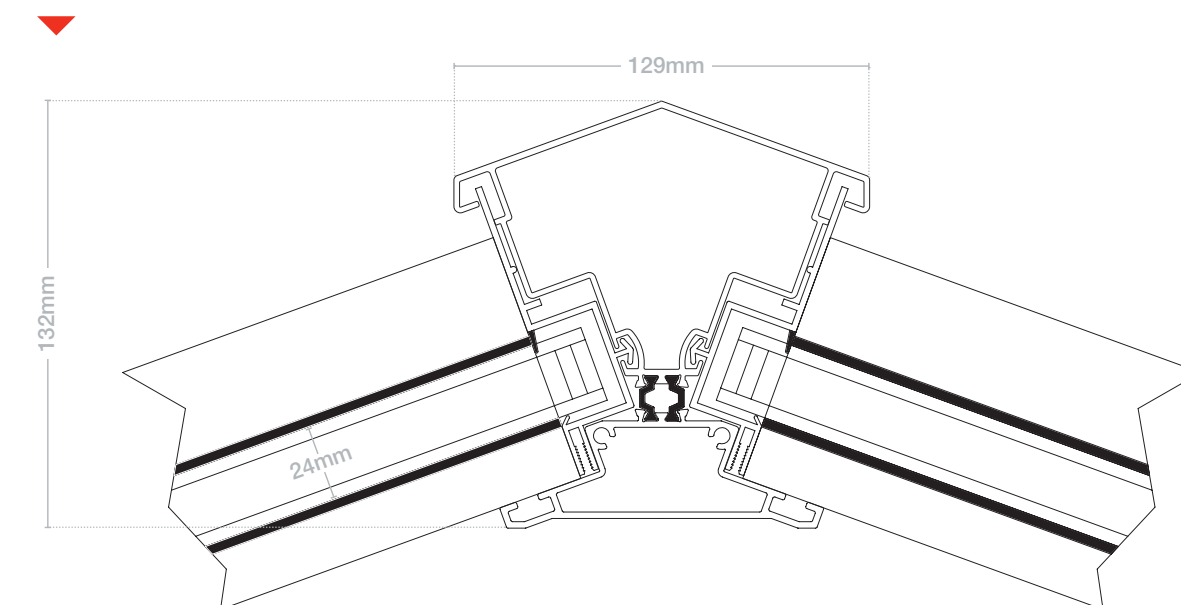
Glazing stop
CRS 8211

Glazing stop screws (for glazing stop)
CRS 8628

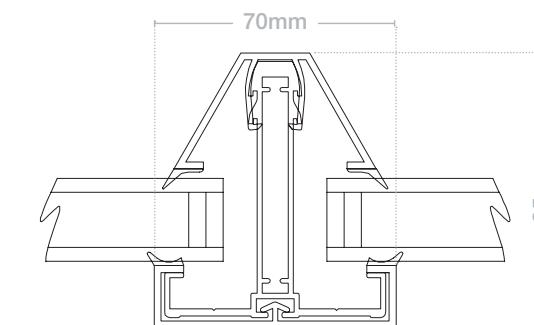
ASSEMBLIES

Ridge assembly

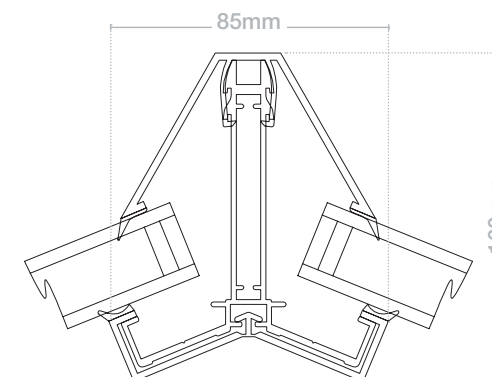
Powder-coated aluminium, thermally broken



Rafter assembly



Hip assembly



INSTALLATION

To see an in-depth installation guide, please contact the Customer Care Team on **0800 988 3047**

TURN FOR
TECHNICAL
INFO



CASE STUDY

SKYPOD TRANSFORMS FLAT-ROOF EXTENSION

When builder Colin Clarkson visited his local Eurocell branch in Wakefield to get a price on some roof tiles, he did not expect to end up renovating his new home from top to bottom in products from one single source. Yet now his upgraded bungalow features Eurocell-sourced products throughout – from Tapco composite slate tiles to Skypod skylights, a Dales Collection composite door, PVC-U windows and even the rainwater goods.

The building itself was an early 1960s two-bedroom brick and block bungalow with a conservatory extension and was in a state of disrepair. Colin saw its potential and bought it to convert into a three-bedroom home with pitched dormers and a flat-roofed extension that matched the best of contemporary design and living standards.

“I first went to Eurocell because it was one of the few suppliers of Tapco composite roof slates and they were well priced, yet then when I saw the Skypod skylights I wanted them. I had a conservatory before and knew this would sort the problem of freezing in winter and boiling in summer. And it all grew from there.”

Supplied with a 10-year guarantee, Skypod skylights are swiftly installed and bring the benefits of extra light and height without the penalty in conservatory heating costs as the double-glazed skylight has a U-value of 1.0. A wide range of frame and glass options complement any home while self-cleaning, temperature controlled glass keeps maintenance to a minimum. Available in a choice of designs, Skypod can be manufactured to fit any space with sizes up to 2.75m x 8.7m.

“When I saw the Skypod skylights I wanted them. I had a conservatory before and knew this would sort the problem of freezing in winter and boiling in summer.”

Colin Clarkson
Builder



All together better

For more information about **skypod** pitched PVC-U skylights from Eurocell, call our customer services team on **0800 988 3047**, or visit **eurocell.co.uk/skypod**

Eurocell plc, Fairbrook House, Clover Nook Road, Alfreton, Derbyshire DE55 4RF



eurocell.co.uk

SKYPODTRADE/AUG15/CC